

TR3-SERIES CONVEYOR

The TR3-Series conveyor is designed to move materials from one to another. The TR3-Series is used mainly for boxes, containers, bags, and sacks. If you need to move bulky objects, either small or large, from one story to another, these belt conveyors are the material movers that you need.

SPECIFICATIONS

- BED:** Slider bed
- FRAME:** 7/8" or 1-1/4" OD steel tubing material.
- BELT:** 16", 20" or 24" wide - 2 ply 150 black rubber x bare
- CLEAT:** 4 in. tall paddle cleats on 6 ft. centers.
- MOTOR:** Electric, gas, or hydraulic motor available (see options).
- DRIVE:** V-belt, or gearbox drive.
- BEARINGS:** Sealed, pre-lubricated, self-aligning, ball bearings.
- DRIVE PULLEY:** 8" in diameter. Open wing pulley.
- TAIL PULLEY:** 7" in diameter. Open wing pulley.
- BELT SPEED:** Constant 60 FPM. Other speeds available.



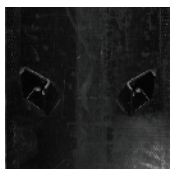
REDLINE SYSTEMS, INC TR3-SERIES

TR3-SERIES CONVEYOR DIMENSIONS			BELT WIDTH		BELT WIDTH		BELT WIDTH	
			16"	20"	16"	20"	16"	20"
MODEL	A	B 2nd Floor height	C	C	D	D	E	E
TR3-10	10'	4 ft. to 5 ft.	16"	20"	23.25"	27.25"	22.75"	26.75"
TR3-12	12'	5 ft. to 6 ft.	16"	20"	23.25"	27.25"	22.75"	26.75"
TR3-14	14'	6 ft. to 7 ft.	16"	20"	23.25"	27.25"	22.75"	26.75"
TR3-16	16'	7 ft. to 9 ft.	16"	20"	23.25"	27.25"	22.75"	26.75"
TR3-18	18'	9 ft. to 10 ft.	16"	20"	23.25"	27.25"	22.75"	26.75"
TR3-20	20'	10 ft. to 11 ft.	16"	20"	23.25"	27.25"	22.75"	26.75"
TR3-22	22'	11 ft. to 12 ft.	16"	20"	23.25"	27.25"	22.75"	26.75"
TR3-24	24'	12 ft. to 13 ft.	16"	20"	23.25"	27.25"	22.75"	26.75"
TR3-26	26'	13 ft. to 14 ft.	16"	20"	23.25"	27.25"	22.75"	26.75"
TR3-28	28'	14 ft. to 15.5 ft.	16"	20"	23.25"	27.25"	22.75"	26.75"
TR3-30	30'	16 ft. to 17 ft.	16"	20"	23.25"	27.25"	22.75"	26.75"
TR3-32	32'	17 ft. to 18 ft.	16"	20"	23.25"	27.25"	22.75"	26.75"

Special Conveyor widths and lengths available on request.

MOTOR MOUNT LOCATION

TYPE G: Underside mount at infeed end of conveyor.



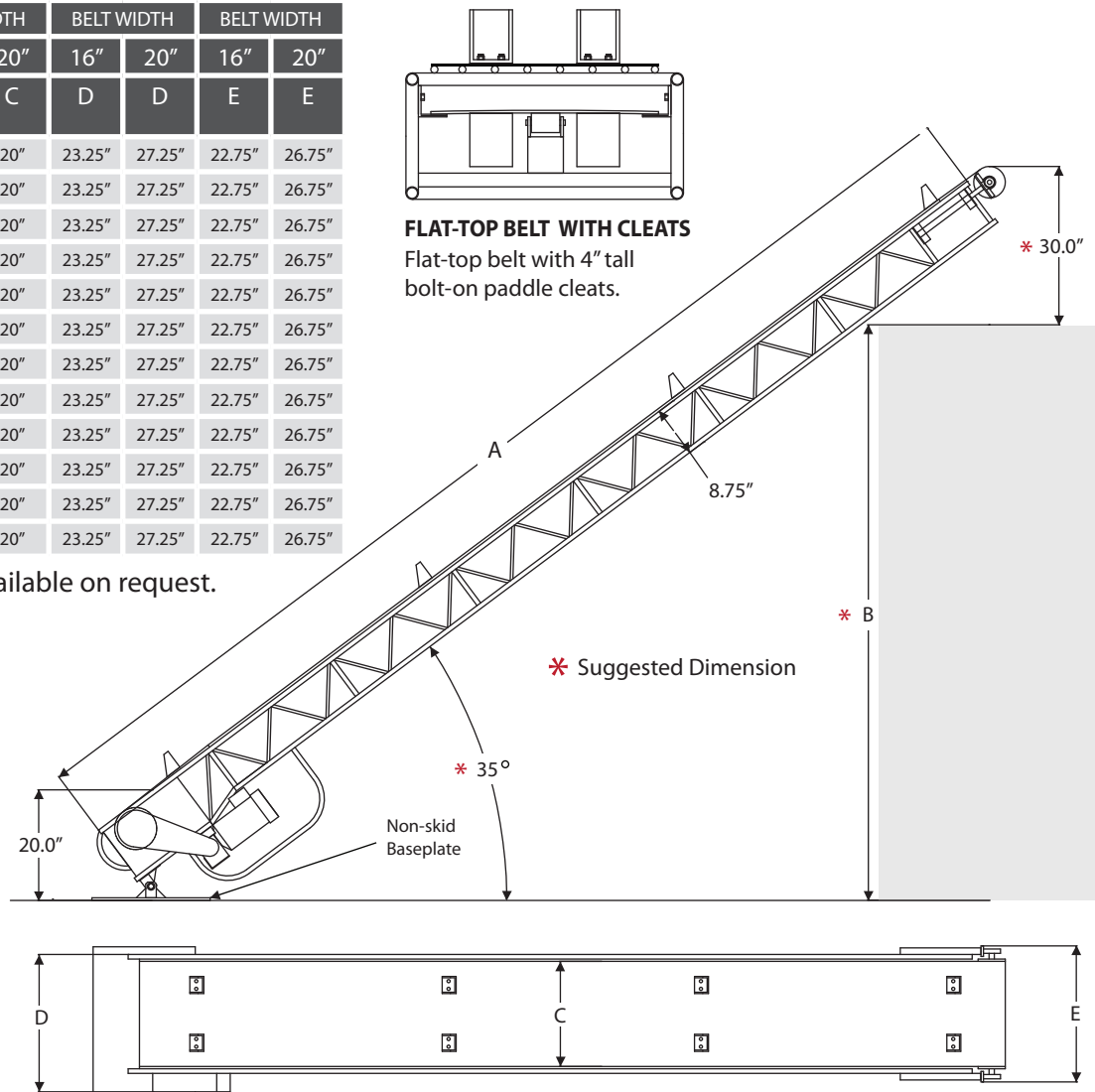
ANGLED CLEATS

Angled cleats to accommodate round objects such as buckets, barrels, tires, etc.



STRAIGHT CLEATS

Straight cleats to accommodate square objects such as boxes, bags, totes, etc.



OPTIONAL EQUIPMENT

FLOOR SUPPORTS

PORTABLE UNDERCARRIAGE

PORTABLE TOW DOLLY & HITCH

CASTER WHEELS

LOADING HOPPERS

BELT COVERS

ELECTRIC CONTROLS

SKIRTED SIDES

VARIABLE BELT SPEED

GAS ENGINE

HYDRAULICS

PNEUMATIC MOTOR

Redline

SYSTEMS INC

560 SOUTH MAIN STREET

CLEARFIELD, UT 84015

PH: 800.453.2447